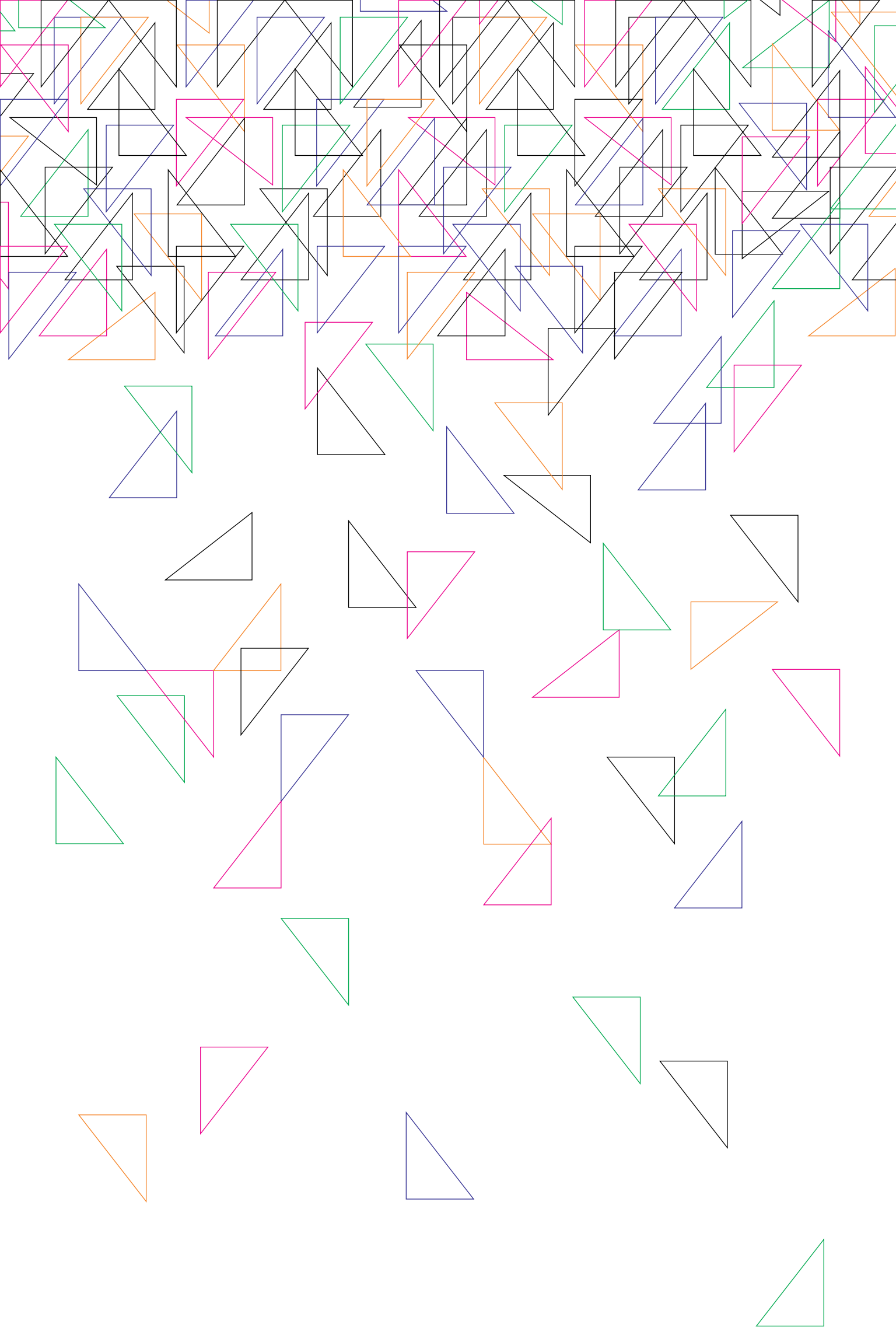


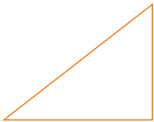


GREAT GULF

TUX



EVOLVE YOUR LIFE.



**ARCHITECTURE EVOLVES.** In Toronto's vibrant Entertainment District. Pure design. Absolute precision. The cutting-edge architectural design of TUX is obsessively spectacular. Forty-two storeys of contemporary elegance. Black and white with a passionate stroke of copper-hued detailing. A soaring, double storey ground floor radiates light out onto the street, and accentuates the brilliant three dimensional kinetic art installation that is suspended high above the floor. TUX is choreographed contrasts. A new vision in urban architecture.

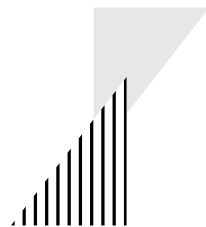




ILLUSTRATION IS ARTIST'S IMPRESSION.

CUTTING-EDGE  
ARCHITECTURE







**LEISURE EVOLVES.** Seriously sexy, decadently designed. The collaborative endgame of a creative cuddle between designer and architect. Check out the scene on “The Skytop Lounge”. Expose all that’s legal on the rooftop pool/cabana deck. Slip down to “The Seven”, workout, hang out, play games. Life at TUX is for ardent pleuristas and dedicated celebrity-style partyists. The Entertainment District doesn’t stop at the front door.



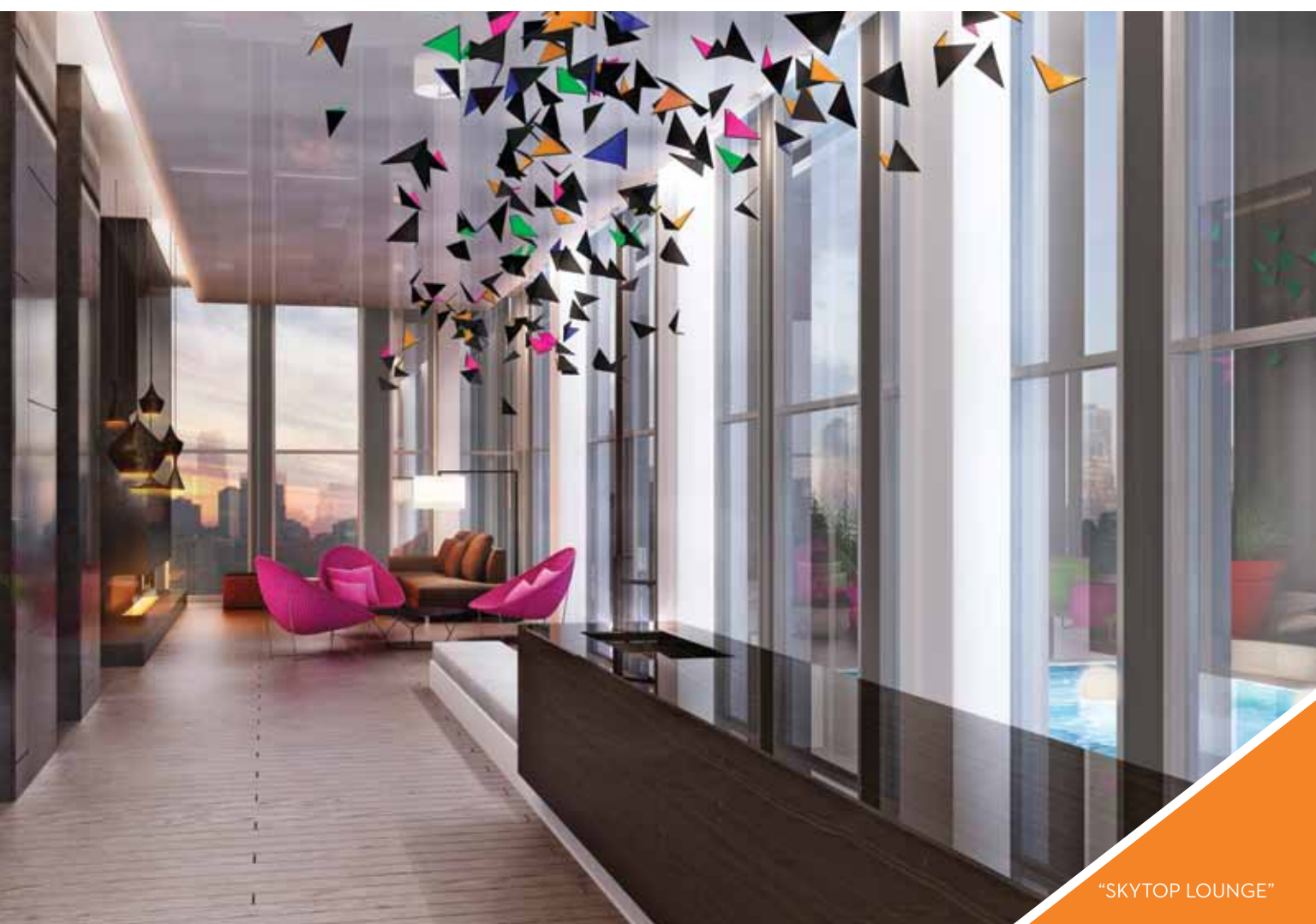




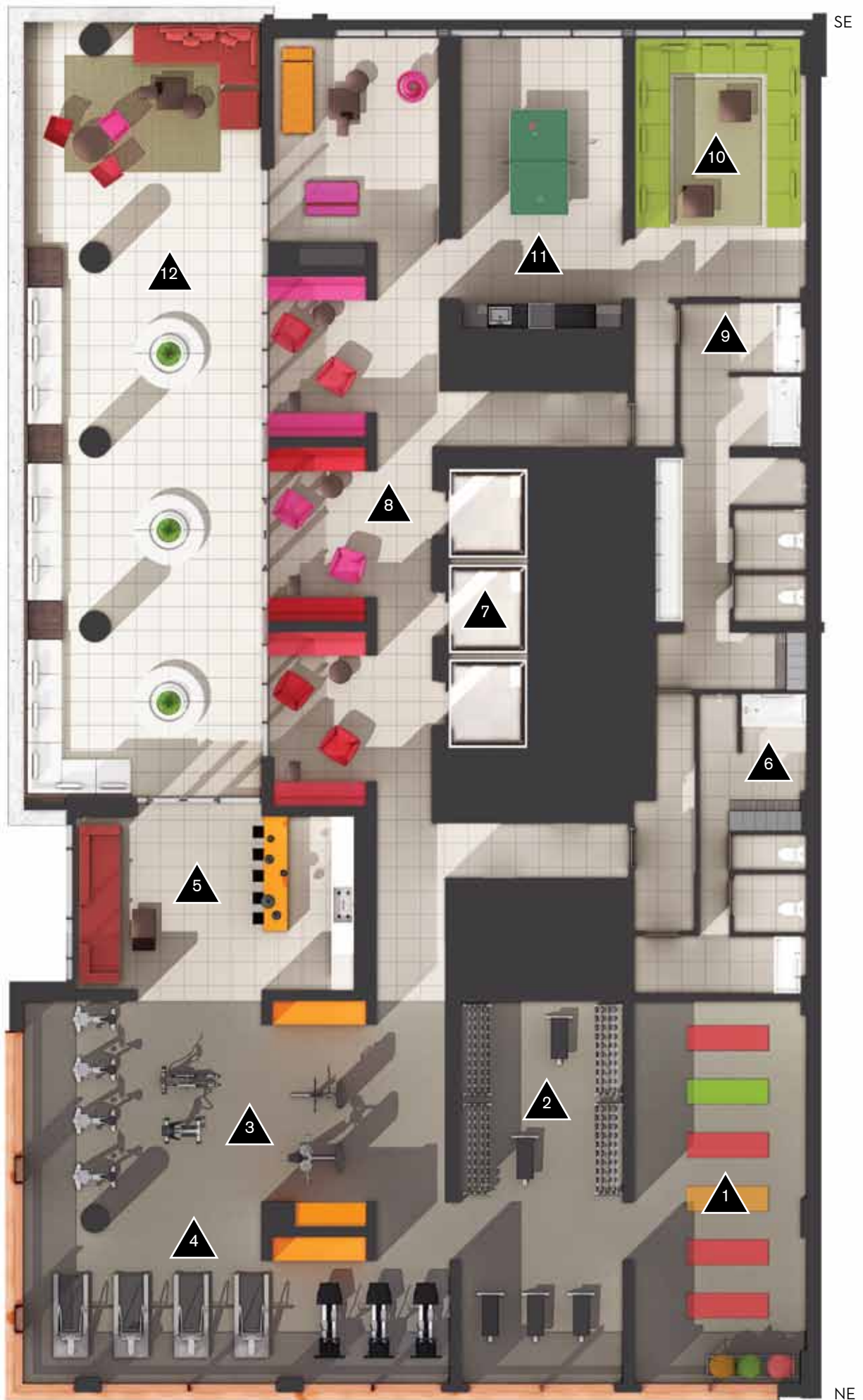


ROOFTOP POOL  
& CABANA DECK





"SKYTOP LOUNGE"



1. YOGA
2. WEIGHT ROOM
3. CARDIO
4. FITNESS ROOM

5. JUICE BAR
6. HER CHANGEROOM
7. ELEVATORS
8. "CHAT ROOMS"

9. HIS CHANGEROOM
10. MEDIA LOUNGE
11. PING PONG ROOM
12. OUTDOOR LOUNGE



1. CABANA DECK
2. HOT AND COLD PLUNGE
3. BBQ
4. DINING

5. BAR
6. "SKYTOP LOUNGE"
7. WASHROOM
8. ELEVATORS



**NEIGHBOURHOODS EVOLVE.** In the neighbourhood where cuisine and culture co-inhabit with business and bravada and where, once-a-year, flashbulbs blind A-list celebrities as they attend festival premiers, you'll find TUX condominiums. This is the city's entertainment scene featuring theatre, opera, ballet, baseball, hockey. Pro-culture, pro-sports and pro-shopping together at last. Home to nightlife luminaries, sensuale and red hot restaurateurs who keep advancing the culinary luxe-factor. This is a neighbourhood in full flight. Feel the joy. See and be seen. This is the evolution of downtown.





SHOPPING

- 1. ARITZIA
- 2. CALPHALON CULINARY CENTRE
- 3. CLUB MONACO
- 4. DESIGN WITHIN REACH
- 5. EATON CENTRE
- 6. FRESH & WILD
- 7. GET OUTSIDE
- 8. LAVISH AND SQUALOR
- 9. LCBO
- 10. LOBLAWS
- 11. SHOPPER'S DRUG MART
- 12. SOBEYS



DINING

- 1. AJI SAI
- 2. ALIMENTO
- 3. BIER MARKT
- 4. BUCA
- 5. FRESH
- 6. FUSARO'S
- 7. KHAO SAN ROAD
- 8. LUMA
- 9. O&B CANTEEN
- 10. QUEEN MOTHER CAFÉ
- 11. CRUSH WINE BAR
- 12. RODNEY'S OYSTER HOUSE



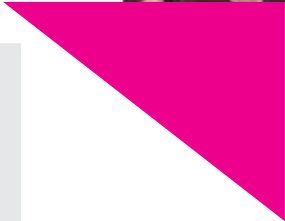
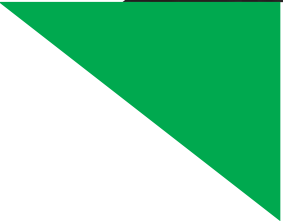
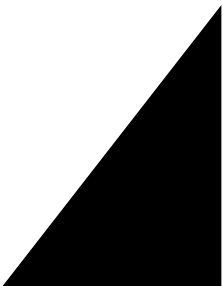
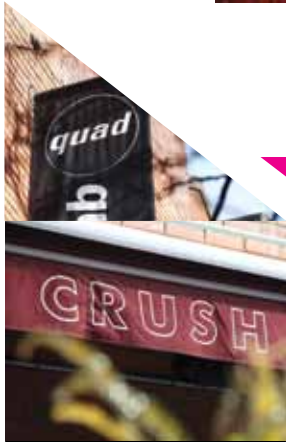
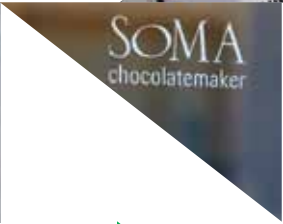
ENTERTAINMENT

- 1. AIR CANADA CENTRE
- 2. ROYAL ALEXANDRA THEATRE
- 3. CN TOWER
- 4. FOUR SEASONS CENTRE FOR THE PERFORMING ARTS
- 5. PRINCESS OF WALES THEATRE
- 6. ROGERS CENTRE
- 7. ROY THOMPSON HALL
- 8. ST. ANDREWS PLAYGROUND
- 9. TIFF LIGHTBOX



SERVICES

- 1. BODY BLITZ SPA
- 2. BRENNAN DEMELO STUDIO
- 3. CAMDEN SPA
- 4. EXTREME FITNESS
- 5. HAMMAM SPA
- 6. JOHN STEINBERG & ASSOCIATES
- 7. QUAD SPIN
- 8. TOTUM FITNESS
- 9. TULA YOGA
- 10. YOGA TREE





## GREAT GULF

Great Gulf started building homes over 35 years ago. To date - 40,000 and counting. We're not just building places to live anymore, we're building new ideas about home. We create teams of the best architects, designers, and engineers. We work together to explore new concepts in living and then we figure out how to make them real. We practice a holistic design philosophy that encompasses light, colour, texture, proportion, ergonomics, and environmental sustainability, all in service of a better quality of life. We pioneer technology that advances the science of building. We dedicate ourselves to understanding and then meeting our customers' needs, creating for them a greater experience of home and community.



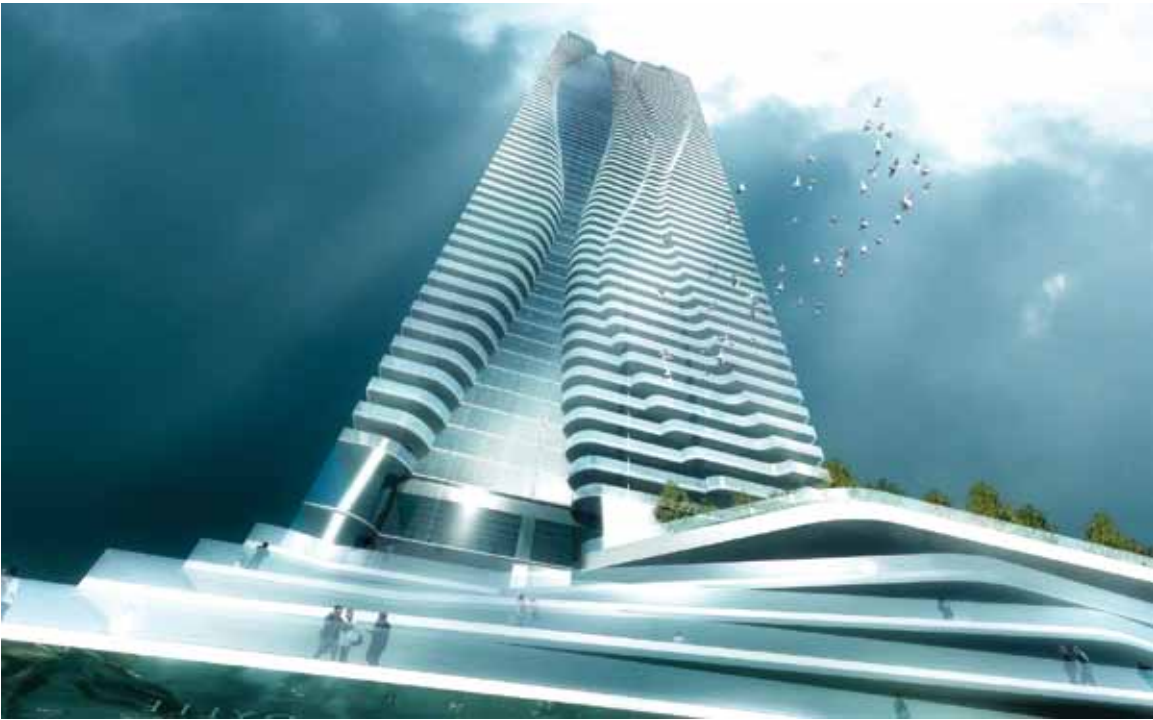
THE HUDSON



X2



MONDE



ONE BLOOR



GREAT GULF HAS JAZZED UP THE TEAM AT TUX. ADVANCING THEIR VISION TO MAKE TUX THE REDEFINING DOWNTOWN RESIDENCE.

#### QUADRANGLE ARCHITECTS LIMITED

TUX was designed by Quadrangle Architects, one of Canada's most renowned architectural practices. For over 25 years Quadrangle has been designing residences that have been honoured with awards for their architectural quality, technical innovation, urbanism and sustainability.

#### FIGURE3

Interiors at TUX have been designed by Figure3, renowned interior design firm. Figure3's multi-disciplinary team develops millions of square feet of space with thoughtful, innovative, meaningful design, environments that are an optimal mix of space, behaviour and culture.

#### FERRIS + ASSOCIATES INC.

Ferris + Associates is the landscape architects for TUX. The team has a broad range of experience in residential projects, and are recognized worldwide as a leader in the field, creating some of the most breathtaking landscape environments.



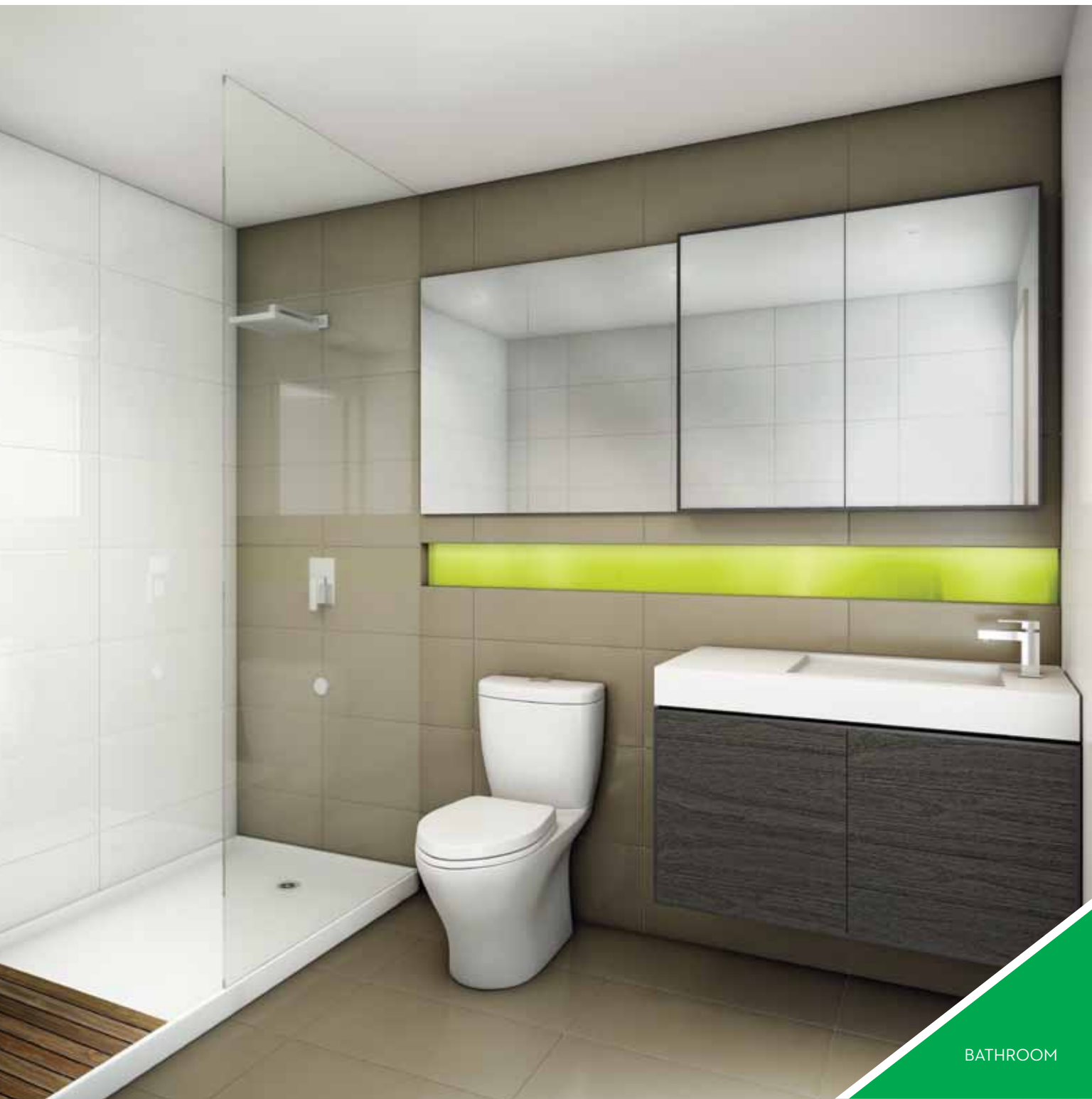
**SPACES EVOLVE.** Your world domination starts here, in your new home at TUX. These are transformable spaces that evolve to suit your life. Movable walls, unexpected surprises. Make home your signature of contemporary coolness, define the clarity of your individual vision, at TUX you can do it all. Here, views permeate the interiors; the cityscape, the lakescape, the skyscape. Captured through panoramic windows. An ever changing portrait of sophisticated living. Life and space evolved.







KITCHEN &  
WORK NICHE



BATHROOM

# FEATURES + FINISHES

## THE BUILDING

- > Great Gulf Tux is a new approach to architectural design in the heart of the entertainment district, at the southwest corner of King Street West and Blue Jays Way, Toronto. The main entrance is off of Blue Jays Way.
- > Spectacular double-height lobby and extensive amenities designed by internationally-renowned and award-winning interior design firm, Figure 3. Amenities will be located on the 7th and 42nd floors. The 7th floor will include a juice bar, yoga room, weight room, cardio room and fitness room, his and her change-rooms, ping pong room, media lounge, private lounges known as “The Seven”, and an outdoor lounge equipped with seating. The 42nd floor will include the “Skytop Lounge” equipped with indoor seating, a dining room, bar, and washrooms. This floor also features an outdoor cabana deck with Highwater Pools, lounge seating, dining areas and barbeque.
- > 24 hour, 7 day a week concierge.
- > Executive porter.
- > Underground parking with security monitoring from concierge station.
- > Groundbreaking and innovative automated parking garage.
- > 3 custom-designed high-speed elevators.
- > Bicycle parking for residents and visitors.
- > Mailroom conveniently located beside front lobby.

## THE SUITES

- > Ceiling heights of approximately 9 ft. Ceiling heights are exclusive of bulkheads, which are required for mechanical purposes such as heating, cooling ducts, and sprinklers, as well as dropped ceilings in bathrooms.
- > Choice of designer-selected pre-finished engineered flooring throughout, except in bathroom and laundry areas, as per builder’s standard samples.
- > Laundry areas to be porcelain floor tile.
- > Solid core entry door with security view-hole.
- > Sliding or swing closet doors in bedrooms, as per plans.
- > Satin chrome lever door handles and hardware.
- > White wire shelving in all closets.
- > Insulated double-glazed, aluminum windows.
- > Stacked brand-name energy efficient washer and dryer with exterior venting in all suites, as per plans.
- > Emergency voice communications system, smoke, and carbon monoxide detector where applicable.
- > Pre-wired for cable TV and telephones.
- > Pre-wired for high-speed internet access provided with future ready technology features in all suites.
- > White “Decora” switches and outlets throughout.
- > Integrated Media Niche as per plan.

## COOK

- > Contemporary kitchen cabinetry custom designed by Figure 3, in a variety of colours, from builder’s standard samples.
- > Solid surface stone kitchen countertop, from builder’s standard samples.
- > Glass backsplash, from builder’s standard samples.
- > Single bowl stainless steel under mounted sink with contemporary design faucet with integrated pull-out head.
- > Ceiling mounted track lighting.
- > Integrated counter-depth refrigerator, stainless steel slide-in electric range with convection oven, stainless steel microwave and integrated dishwasher.
- > Integrated hood fan insert.

## WASH

[main wash in one bathroom suites]

- > Contemporary washroom vanity in a selection of colours from builders standard samples, featuring a white solidtech countertop basin.
- > Polished chrome side mounted faucet.
- > Full width mirror above vanity.
- > Recessed ceiling light(s).
- > Choice of porcelain floor tiles, from builder’s standard samples.
- > Frameless glass shower enclosures, as per plan.
- > Accessory package including towel bar and toilet paper holder, where applicable.
- > Full height white ceramic wall tiles in shower enclosure, from builder’s standard samples.
- > White toilet, and shower base as per plan.
- > ERV exhaust fan vented to exterior.
- > Pressure balance valve shower.
- > Wall mounted polished chrome rain shower as per builders plan.
- > Integrated wall accent featuring coloured glass.

## MASTER WASH

[or second bathroom in two bathroom suites]

- > Contemporary washroom vanity in a selection of colours from builders standard samples, featuring a white solidtech countertop basin.
- > Polished chrome side mounted faucet.
- > Full width mirror above vanity.
- > Recessed ceiling light(s).
- > Choice of porcelain floor tiles, from builder’s standard samples.
- > Soaker tub, as per plan.
- > Accessory package including towel bar and toilet paper holder, where applicable.
- > Full height white ceramic wall tiles in tub enclosure, from builder’s standard samples.
- > White tub, and toilet as per plan.
- > ERV exhaust fan vented to exterior.
- > Pressure balance valve for tub.
- > Wall mounted polished chrome rain shower as per builders plan.

## THE BUILDERS

Great Gulf is a member of BILD (Building Industry and Land Development Association) of Toronto.

All suites protected under the Tarion Warranty Corporation.

Interior design consultation at Décor Centre on all finishes and colour packages included in purchase price.

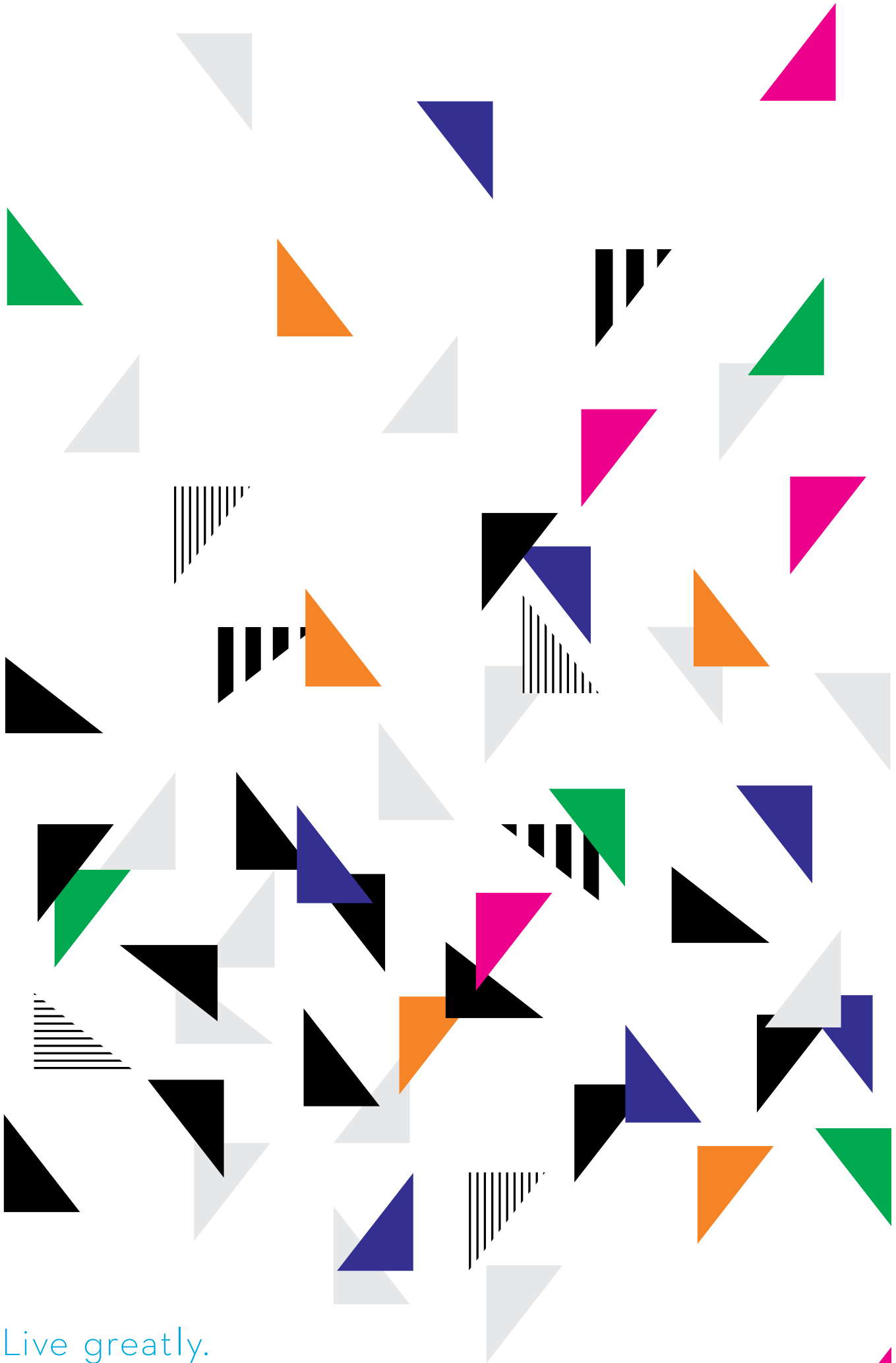
All interior floor, wall finishes and materials are to be chosen with the assistance of the Builder’s Interior Design Consultant. All materials and other selections for which the Purchaser is entitled to make a selection are to be chosen from Builder’s samples, and are as per Builder’s specifications. Purchaser shall only be entitled to make such selections provided that the items are not already ordered or installed. All renderings are for illustrative purposes only and do not necessarily reflect actual finishes to be provided.

Sizes and specifications are subject to change without notice. E. & O.E.





GREAT GULF



Live greatly.

357 KING STREET WEST TORONTO 416 490 7889 [416 490 7TUX] [GREATGULF.COM/REGISTER](http://GREATGULF.COM/REGISTER)

Exclusive listing brokerage Baker Real Estate Incorporated. Brokers protected. Specifications subject to change without notice. E. & O.E. Illustrations are artist's impression.