

TRIDEL®
BUILT FOR LIFE



101

ERSKINE

A M I D T O W N M O D E R N I S T S E N S I B I L I T Y



101 ERSKINE CELEBRATING THE RICHNESS OF LIFE

Following the extraordinary success of the elegant Republic condominium, Tridel now introduces 101 Erskine. This smartly tailored condominium residence and signature townhomes are ideally tucked away, mere minutes from the energy of Yonge and Eglinton, the subway, prestigious shops and superb dining. Whether a formidable pied à terre or a distinctive primary residence, this Tridel Built Green. Built For Life.® condominium is a cosmopolitan address in the heart of the city.

A MIDTOWN MODERNIST SENSIBILITY

101 Erskine's penchant for sleek is echoed in its clean linear exterior design and refined interiors. The notable charcoal grey, white and clear glass tower with copper clad front entry gives way to a stunning lobby and sublime entertainment spaces with private courtyard, alfresco dining area and premium fitness amenities on the first floor. The sixth floor Rooftop Terrace is highlighted by an Infinity Pool and Fireplace Lounge.

A thoughtfully designed linear park walkway leads past the signature townhomes, creating a graceful tree-lined connection between Erskine and Broadway Avenues.



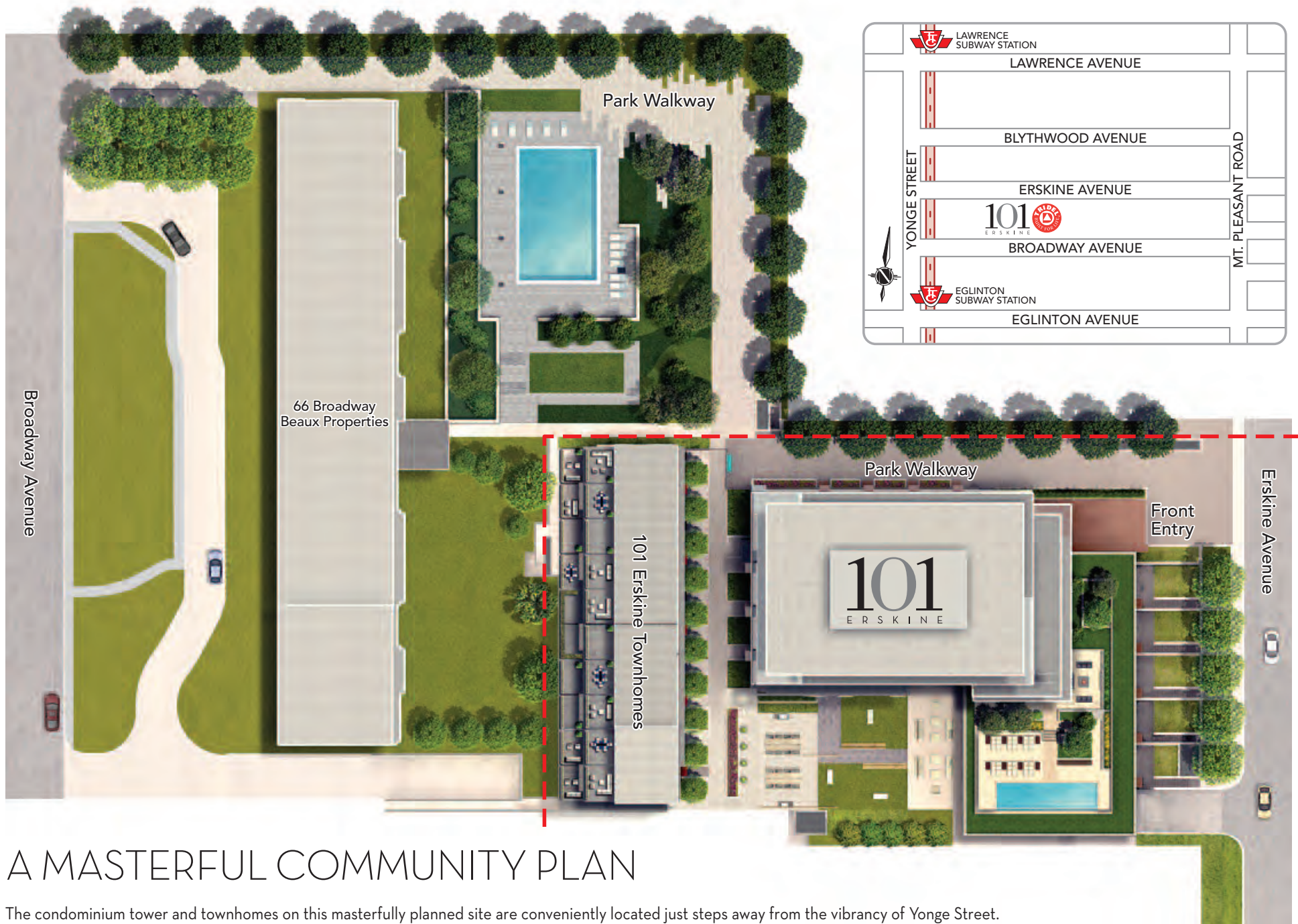
STELLAR VIEWS IN ALL DIRECTIONS



101
ERSKINE



101 Erskine's statement-making profile and signature townhomes.



A MASTERFUL COMMUNITY PLAN

The condominium tower and townhomes on this masterfully planned site are conveniently located just steps away from the vibrancy of Yonge Street. Lush tree-lined perimeters offer privacy from neighbouring residences, while a landscaped path links 101 Erskine to the residences at The Republic on Broadway Avenue -- Tridel's other prestigious midtown address.



YONGE & EGLINTON
FROM HERE GO ANYWHERE
IN MOMENTS

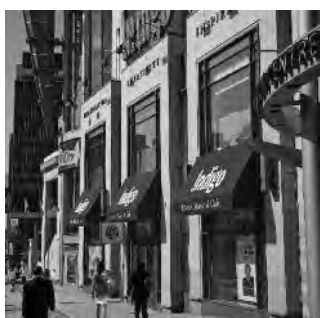




A MYRIAD OF POSSIBILITIES

Top tier retailers and restaurateurs flourish in this midtown neighbourhood, thanks to prime subway and bus route access. Within easy walking distance from 101 Erskine, a vibrant mecca of world class dining, shopping and leisure spaces await.





WEEKENDS ALLOW FOR THE SIMPLE
MOMENTS TO BE SAVOURED





A COVETED ADDRESS MERITS A STATEMENT-MAKING APPROACH

Rarely is an entry imbued with such sculptural inspiration. Then again, 101 Erskine defies the expected at every turn. The copper clad entrance alludes to the modernity of all that awaits inside.